

**R450-300 Hershey®
Reese's® Peanut Butter Cups**



Issue Date:	6/11/2020	Revision:	F
-------------	-----------	-----------	---

PRODUCT DESCRIPTION	
Varying sized pieces of chopped Reese's Peanut Butter Cups candy.	

PHYSICAL ATTRIBUTES							
Appearance:	Chopped Reese's Peanut Butter Cups						
Color:	Typical Reese's Peanut Butter Cups, brown with light brown center						
Flavor:	Chocolate with peanut butter						
Texture:	Chopped peanut butter pieces coated in milk chocolate						
Pack Size:	1 x 30 Lbs.						
Case Dimensions:							
L[depth]xWxH in.	10.8	12.5	12.5	Case Cube(ft ³):	0.9766	Pallet Conf. (TI / HI)	12 4

INGREDIENTS	
MILK CHOCOLATE (SUGAR, COCOA BUTTER, CHOCOLATE, SKIM MILK, MILK FAT, LACTOSE, SOY LECITHIN, PGPR), PEANUTS, SUGAR, DEXTROSE, SALT, TBHQ AND CITRIC ACID, TO MAINTAIN FRESHNESS.	
ALLERGENS: CONTAINS: MILK, SOY AND PEANUT. MAY ALSO CONTAIN TRACES OF: TREE NUTS, EGG AND WHEAT.	

Cornstarch is used as a processing aid.

NUTRITIONAL INFORMATION	
NUTRIENT	Per 100g
CALORIES	527.52
TOTAL FAT (g)	29.24
SATURATED FAT (g)	10.46
TRANS FAT (g)	0.12
CHOLESTEROL (mg)	7.37
SODIUM (mg)	351.45
TOTAL CARBOHYDRATE (g)	55.54
DIETARY FIBER (g)	3.74
TOTAL SUGARS (g)	51.09
ADDED SUGARS (g)	47.38
PROTEIN (g)	10.88
VITAMIN D (mcg)	0.38
CALCIUM (mg)	92.24
IRON (mg)	2.85
POTASSIUM (mg)	360.29



Nutrition Facts	
About 648 servings per container	
Serving size	2 Tbsp (21g)
Amount per serving	
Calories	110
% Daily Value*	
Total Fat 6g	8%
Saturated Fat 2g	10%
Trans Fat 0g	
Cholesterol 0mg	0%
Sodium 75mg	3%
Total Carbohydrate 12g	4%
Dietary Fiber 1g	4%
Total Sugars 11g	
Includes 10g Added Sugars	20%
Protein 2g	
Vitamin D 0mcg	0%
Calcium 19mg	2%
Iron 1mg	6%
Potassium 76mg	2%

*The % Daily Value tells you how much a nutrient in a serving of food contributes to a daily diet. 2,000 calories a day is used for general nutrition advice.

Brand Name:	TR Toppers	Net Weight: (Lbs.)	30.00
Country of Origin	Mexico	Net Weight: (Kg.)	13.61
Case GTIN	00651844100106	Gross Weight: (Lbs.)	32.00
Kosher	Star-D	Gross Weight: (Kg.)	14.52
Metal Detection	1.5mm Ferrous	1.8mm Non-Ferrous	2.0mm SS316

MICROBIOLOGICAL ATTRIBUTES*	
Attributes	Limits
Total Aerobic Plate Count (cfu/g)	<25,000
Yeast and Mold (cfu/g)	<100
Coliforms (cfu/g)	<10
E. coli (/g)	Negative
Salmonella (/375g)	Negative

*The above attributes are provided by the product manufacturer. Parameters are guaranteed attributes. It is not indicative of product testing.

GMO STATEMENT	
	Completely Produced with Genetic Engineering.
X	Partially Produced with Genetic Engineering.
	May be produced with Genetic Engineering.
	NOT Produced with Genetic Engineering.

STORAGE CONDITIONS	
Recommended Condition:	Best kept frozen ($\leq 10^{\circ}$ F).
Alternate Condition:	May be refrigerated ($\leq 40^{\circ}$ F).

SHIPPING CONDITIONS	
Recommended Condition:	Best kept frozen ($\leq 10^{\circ}$ F).
Alternate Condition:	Temper in refrigeration temperature. Temper for 36 to 48 hours. Do Not temper in ambient condition. Do Not store at ambient conditions. Seal container after opening. Refrigerate promptly after opening.

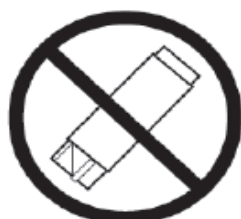
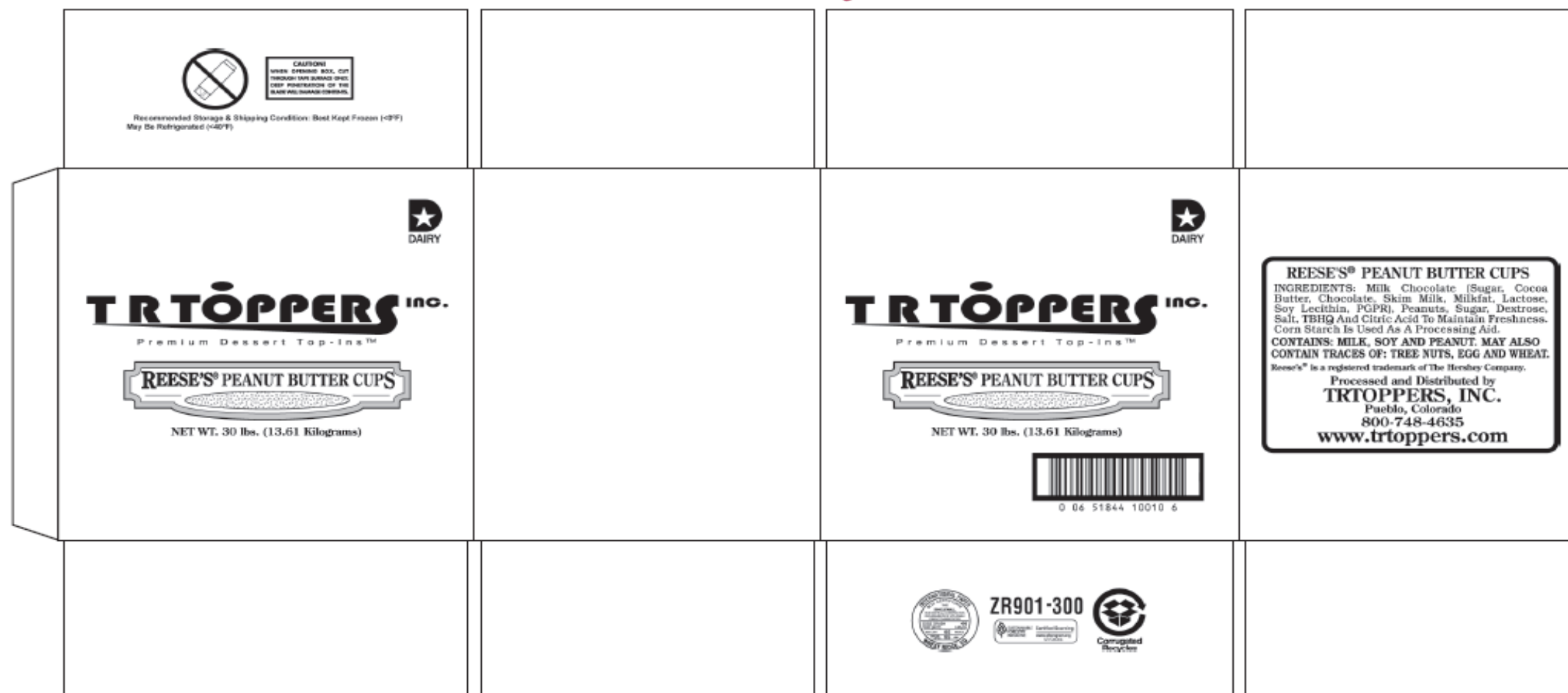
SHELF LIFE	
Recommended Shelf Life:	300 days at recommended storage conditions.
Alternate Shelf Life:	Calculate 1/3 of remaining shelf life when opened and stored at refrigeration temperature.

ALLERGEN / SENSATIZER TABLE			
COMPONENT	PRESENT IN PRODUCT	PRESENT IN PRODUCTS MANUFACTURED ON THE SAME LINE	PRESENT IN THE SAME MANUFACTURING PLANT
PEANUTS AND DERIVATIVES	YES	YES	YES
TREE NUTS AND DERIVATIVES	MAY CONTAIN	YES	YES
EGG AND DERIVATIVES	MAY CONTAIN	YES	YES
MILK AND DERIVATIVES	YES	YES	YES
SOY AND DERIVATIVES	YES	YES	YES
WHEAT	MAY CONTAIN	YES	YES
FISH	NO	NO	NO
CRUSTACEAN SHELLFISH	NO	NO	NO
SULFITES > 10 ppm	NO	YES	YES
MUSTARD	NO	NO	NO
SESAME	NO	NO	NO
GLUTEN	MAY CONTAIN (WHEAT)		
ARTIFICIAL FLAVOR SOURCE	NONE		
FD&C ARTIFICIAL COLORS	NONE		

GRANULATION										
Sieve Size	3/4"	1/2"	1/4"	#8	#20	Pan				
Range (%)	0	0 - 10.5	34.8 - 68.1	18.7 - 42.3	0 - 22.4	0 - 8.1				

CODE FORMAT
Case Code - Left Side: Julian Date, Time, R450-300, PCO, BEST BY MM YYYY
Case Code - Right Side: Julian Date, Time, R450-300, PCO, BEST BY MM YYYY
Pallet Markings: JJY, Pallet #, R450-300
EXAMPLE: 25811 15:32 R450-300 BEST BY MM YYYY
JJJ = Production Julian Date 258 = September 15; Y = Last Digit of Year 1 = 2011; L = Line (Numeric) 1 = Line 1; Time: HH:MM 15:32 = 3:32 p.m.
Product Code = (e.g. R450-300)

LABEL / CASE GRAPHICS



CAUTION!
WHEN OPENING BOX, CUT
THROUGH TAPE SURFACE ONLY.
DEEP PENETRATION OF THE
BLADE WILL DAMAGE CONTENTS.

Recommended Storage & Shipping Condition: Best Kept Frozen (<0°F)
May Be Refrigerated (<40°F)



0 06 51844 10010 6



REESE'S® PEANUT BUTTER CUPS
INGREDIENTS: Milk Chocolate (Sugar, Cocoa Butter, Chocolate, Skim Milk, Milkfat, Lactose, Soy Lecithin, PGPR), Peanuts, Sugar, Dextrose, Salt, TBHQ And Citric Acid To Maintain Freshness. Corn Starch Is Used As A Processing Aid.
CONTAINS: MILK, SOY AND PEANUT. MAY ALSO CONTAIN TRACES OF: TREE NUTS, EGG AND WHEAT.
 Reese's® is a registered trademark of The Hershey Company.
 Processed and Distributed by
TRTOPPERS, INC.
 Pueblo, Colorado
 800-748-4635
www.trtoppers.com

TR TOPPERS inc.
 Premium Dessert Top-Ins™



NET WT. 30 lbs. (13.61 Kilograms)



ZR901-300

