

# G401-201 Blue Gummi Sharks



Issue Date:	8/22/2022	Revision:	C	Manufacturer Item #	50193
-------------	-----------	-----------	---	---------------------	-------

## PRODUCT DESCRIPTION

1.75" L x 1.124" H soft, gummi candy with a fruity flavor.

## PHYSICAL ATTRIBUTES

Appearance:	Gummi texture, shark shape						
Color:	Blue						
Flavor:	Fruity						
Pack Size:	4 x 5 Lbs. Bags						
Case Dimensions:							
L[depth]xWxH in.	17.125	11.375	5.625	Case Cube(ft <sup>3</sup> ):	0.6341	Pallet Conf. (TI / HI)	9 10

## INGREDIENTS

CORN SYRUP (FROM CORN), SUGAR (FROM BEETS), WATER, GELATIN, CITRIC ACID, NATURAL FLAVOR, PECTIN (DERIVED FROM FRUITS), VEGETABLE OIL (COCONUT, CANOLA) AND CARNAUBA LEAF WAX (TO PREVENT STICKING), TITANIUM DIOXIDE (COLOR), FD&C BLUE #1.

**ALLERGENS:** NONE.

## NUTRITIONAL INFORMATION

NUTRIENT	Per 100g
CALORIES	300
TOTAL FAT (g)	0
SATURATED FAT (g)	0
TRANS FAT (g)	0
CHOLESTEROL (mg)	0
SODIUM (mg)	55
TOTAL CARBOHYDRATE (g)	70
DIETARY FIBER (g)	0
TOTAL SUGARS (g)	43
ADDED SUGARS (g)	43
PROTEIN (g)	5
VITAMIN D (mcg)	0
CALCIUM (mg)	11
IRON (mg)	1
POTASSIUM (mg)	6



### Nutrition Facts

75 servings per container  
**Serving size 5 Pieces (30g)**

**Amount per serving**  
Calories 90

	% Daily Value*
<b>Total Fat</b> 0g	<b>0%</b>
Saturated Fat 0g	<b>0%</b>
Trans Fat 0g	
<b>Cholesterol</b> 0mg	<b>0%</b>
<b>Sodium</b> 15mg	<b>1%</b>
<b>Total Carbohydrate</b> 21g	<b>8%</b>
Dietary Fiber 0g	<b>0%</b>
Total Sugars 13g	
Includes 13g Added Sugars	<b>26%</b>
<b>Protein</b> 1g	
Vitamin D 0mcg	0%
Calcium 3mg	0%
Iron 0mg	0%
Potassium 2mg	0%

\*The % Daily Value tells you how much a nutrient in a serving of food contributes to a daily diet. 2,000 calories a day is used for general nutrition advice.

<b>Brand Name:</b>	Albanese ®	<b>Net Weight: (Lbs.)</b>	20
<b>Country of Origin</b>	USA	<b>Net Weight: (Kg.)</b>	9.07
<b>Case GTIN</b>	10634418511932	<b>Gross Weight: (Lbs.)</b>	21
<b>Kosher</b>	Not Kosher	<b>Gross Weight: (Kg.)</b>	9.53
		<b>Pieces Per Pound</b>	About 76

## MICROBIOLOGICAL ATTRIBUTES\*

Attributes	Limits
Total Aerobic Plate Count (cfu/g)	<500
Coliforms (cfu/g)	<10
Yeast and Mold (cfu/g)	<50
E. coli (cfu/g)	<10
Salmonella (/25g)	Negative

\*The above attributes are provided by the product manufacturer. Parameters are guaranteed attributes. It is not indicative of product testing.

## GENETIC ENGINEERING STATEMENT

	Completely Produced with Genetic Engineering.
X	Partially Produced with Genetic Engineering.
	May be produced with Genetic Engineering.
	<b>NOT</b> Produced with Genetic Engineering.

## Ready-To-Eat (RTE) Status:

X	RTE
	Not-RTE

STORAGE CONDITIONS	
Recommended Condition:	Store <85°F with <50% relative humidity.
Alternate Condition:	N/A
Alternate Condition:	N/A

SHIPPING CONDITIONS	
Recommended Condition:	Best shipped <85°F with <50% relative humidity.
Alternate Condition:	May be shipped in freezer or refer truck at 0°F for less than 7 days.
Alternate Condition:	N/A

SHELF LIFE	
Recommended Shelf Life:	540 days at recommended storage conditions.
Alternate Shelf Life:	N/A
Alternate Shelf Life:	N/A

ALLERGEN / SENSATIZER TABLE			
COMPONENT	PRESENT IN PRODUCT	PRESENT IN PRODUCTS MANUFACTURED ON THE SAME LINE	PRESENT IN THE SAME MANUFACTURING PLANT
PEANUTS AND DERIVATIVES	NO	NO	YES
TREE NUTS AND DERIVATIVES	NO	NO	YES
EGG AND DERIVATIVES	NO	NO	YES
MILK AND DERIVATIVES	NO	NO	YES
SOY AND DERIVATIVES	NO	NO	YES
WHEAT	NO	NO	YES
FISH	NO	NO	NO
CRUSTACEAN SHELLFISH	NO	NO	NO
SULFITES > 10 ppm	NO	NO	NO
MUSTARD	NO	NO	YES
SESAME	NO	NO	NO
GLUTEN	NO		
FD&C ARTIFICIAL COLOR	FD&C BLUE #1		

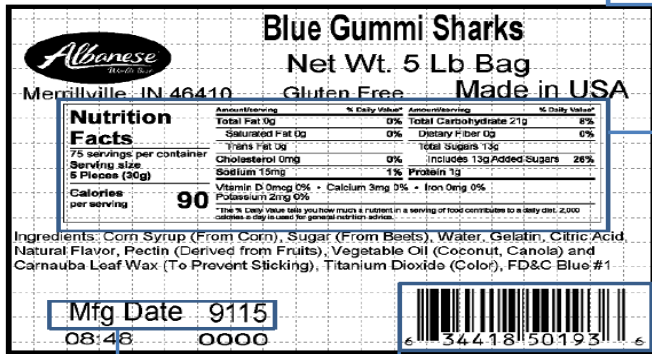
**CODE FORMAT**

**MANUFACTURED DATE:**

Primary Package Coding:

For Example Purposes

The NFP and ingredients must match the NFP and ingredients provided above.



Mfg Date 9115  
08:48 0000



Albanese Manufacturing Date

Product UPC Code

Secondary Package Coding:

For Example Purposes

Product GTIN Code

**Blue Gummi Sharks**

Item#: 50193  
4 - 5 Lbs bags / Case 20 Lbs

Mfg Date: 0113 (April 22, 2020)  
Flavor and Texture Best By:  
October 22, 2021



Albanese internal barcode/Lot number.

**Made in USA**



Albanese Confectionery Group  
Merrillville, IN 1-800-736-0581

Albanese Manufacturing Date & Flavor and Texture best by

