

**S461-100 Chopped Snickers® Bar**

Issue Date: 4/2/2024

Revision:

H

**PRODUCT DESCRIPTION**

Varying sized pieces of chopped Snickers bar candy

**PHYSICAL ATTRIBUTES**

Appearance:	Irregular pieces of chopped Snickers varying in size and shape							
Color:	Brown with light brown centers and peanuts on top							
Flavor:	Chocolate, caramel, nougat, and peanuts							
Pack Size:	2 x 5 Lbs.							
Case Dimensions: L[depth]xWxH in.	6.9	14.7	5.9	Case Cube(ft <sup>3</sup> ):	0.3463	Pallet Conf. (TI / HI)	15	10

**INGREDIENTS**

MILK CHOCOLATE (SUGAR, COCOA BUTTER, CHOCOLATE, SKIM MILK, LACTOSE, MILKFAT, SOY LECITHIN), PEANUTS, CORN SYRUP, SUGAR, PALM OIL, SKIM MILK, LACTOSE, SALT, EGG WHITES, ARTIFICIAL FLAVOR.

**ALLERGENS:** CONTAINS: PEANUTS, MILK, EGG AND SOY. MAY ALSO CONTAIN TRACES OF: TREE NUTS AND WHEAT.

Cornstarch is used as a processing aid.

**NUTRITIONAL INFORMATION**

NUTRIENT	Per 100g
CALORIES	474.46
TOTAL FAT (g)	22.82
SATURATED FAT (g)	8.70
TRANS FAT (g)	0.10
CHOLESTEROL (mg)	4.89
SODIUM (mg)	234.67
TOTAL CARBOHYDRATE (g)	61.35
DIETARY FIBER (g)	2.70
TOTAL SUGARS (g)	52.07
ADDED SUGARS (g)	48.42
PROTEIN (g)	8.55
VITAMIN D (mcg)	0
CALCIUM (mg)	83.27
IRON (mg)	0.89
POTASSIUM (mg)	291.35

**Nutrition Facts**About 216 servings per container  
**Serving size 2 Tbsp (21g)**

Amount per serving

**Calories 100**

% Daily Value\*

Total Fat 4.5g	6%
Saturated Fat 1.5g	8%
Trans Fat 0g	
Cholesterol 0mg	0%
Sodium 50mg	2%
Total Carbohydrate 13g	5%
Dietary Fiber 0g	0%
Total Sugars 11g	
Includes 10g Added Sugars	20%
Protein 2g	
Vitamin D 0mcg	0%
Calcium 20mg	2%
Iron 0mg	0%
Potassium 61mg	2%

\*The % Daily Value tells you how much a nutrient in a serving of food contributes to a daily diet. 2,000 calories a day is used for general nutrition advice.

<b>Brand Name:</b>	TR Toppers	<b>Net Weight: (Lbs.)</b>	10.00
<b>Country of Origin</b>	USA	<b>Net Weight: (Kg.)</b>	4.54
<b>Case GTIN</b>	00651844100021	<b>Gross Weight: (Lbs.)</b>	11.00
<b>Kosher</b>	Star-D	<b>Gross Weight: (Kg.)</b>	4.99
<b>Metal Detection</b>	1.5mm Ferrous	1.8mm Non-Ferrous	2.0mm SS316

**MICROBIOLOGICAL ATTRIBUTES\***

Attributes	Limits
Total Aerobic Plate Count (cfu/g)	<30,000
Yeast and Mold (cfu/g)	<100
Coliforms (cfu/g)	<10
E. coli (cfu/g)	<10
Salmonella (/25g)	Negative
Listeria (/25g)	Negative

\*The above attributes are provided by the product manufacturer. Parameters are guaranteed attributes.

**GMO STATEMENT**

	Produced with Genetic Engineering.
X	Partially Produced with Genetic Engineering.
	May be produced with Genetic Engineering.
	<b>NOT</b> Produced with Genetic Engineering.

STORAGE CONDITIONS	
Recommended Condition:	Best kept frozen (≤10°F).
Alternate Condition:	Temper in Refrigeration temperature for 36 to 48 hours. Do not temper in ambient condition. Do not store at ambient conditions. Seal container after opening. Refrigerate promptly after opening. (Product may clump up in prolonged refrigeration)

SHIPPING CONDITIONS	
Recommended Condition:	Ship frozen (≤10°F).

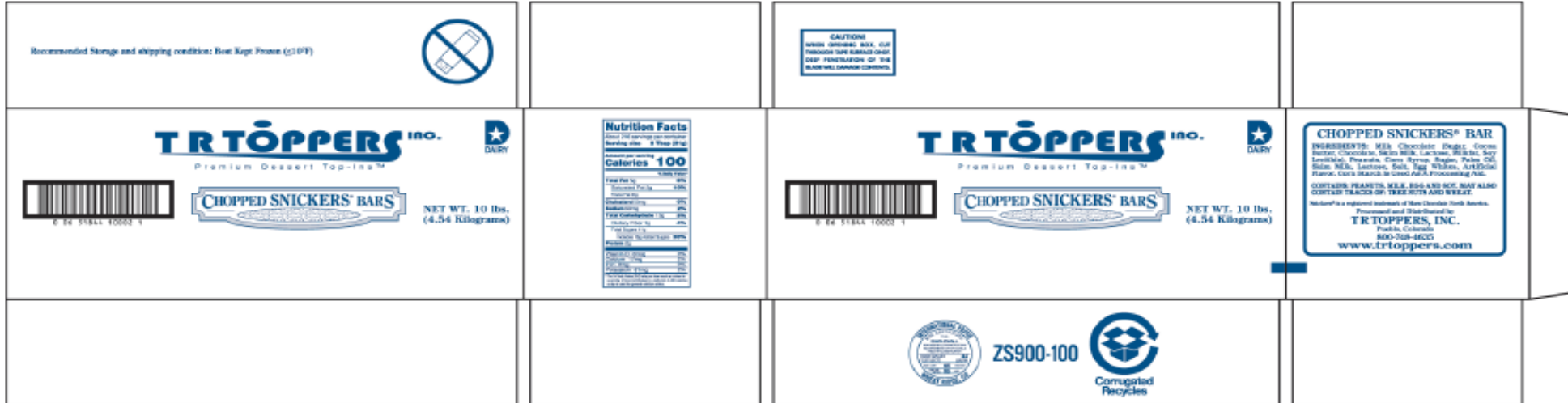
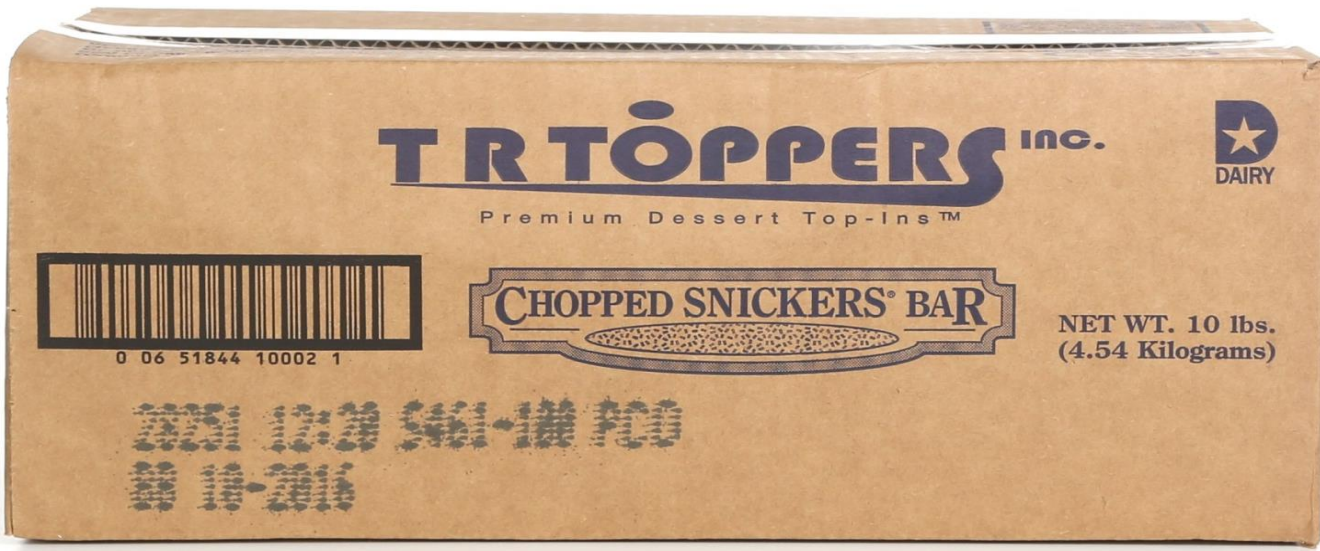
SHELF LIFE	
Recommended Shelf Life:	365 days at recommended storage conditions.
Alternate Shelf Life:	Calculate 2/3 of remaining shelf life when opened and stored at refrigeration temperature.

ALLERGEN / SENSATIZER TABLE			
COMPONENT	PRESENT IN PRODUCT	PRESENT IN PRODUCTS MANUFACTURED ON THE SAME LINE	PRESENT IN THE SAME MANUFACTURING PLANT
PEANUTS AND DERIVATIVES	YES	YES	YES
TREE NUTS AND DERIVATIVES	MAY CONTAIN	YES	YES
EGG AND DERIVATIVES	YES	YES	YES
MILK AND DERIVATIVES	YES	YES	YES
SOY AND DERIVATIVES	YES	YES	YES
WHEAT	MAY CONTAIN	YES	YES
FISH	NO	NO	NO
CRUSTACEAN SHELLFISH	NO	NO	NO
SULFITES > 10 ppm	NO	YES	YES
MUSTARD	NO	NO	NO
SESAME	NO	NO	NO
GLUTEN	MAY CONTAIN (WHEAT)		
ARTIFICIAL FLAVOR SOURCE	VANILLIN		
FD&C ARTIFICIAL COLORS	NO		

GRANULATION										
Sieve Size	3/4"	1/4"	#12	Pan						
%	<1	27 - 71	23 - 49	<26						

CODE FORMAT	EXAMPLE: 25811 15:32 S461-100
Case Code - Left Side: Julian Date, Time, S461-100 PCO, BB MM-YYYY	JJJ = Production Julian Date 258 = September 15; Y = Last Digit of Year 1 = 2011; L = Line (Numeric) 1 = Line 1; Time: HH:MM 15:32 = 3:32 p.m. Product Code = (e.g. S461-100)
Case Code - Right Side: Julian Date, Time, S461-100 PCO, BB MM-YYYY	
Pallet Markings: JJY, Pallet #, S461-100	

LABEL / CASE GRAPHICS



Recommended Storage and shipping condition: Best Kept Frozen ( $\leq 10^{\circ}\text{F}$ )



**TR TOPPERS** inc.  
Premium Dessert Top-Ins™



**CHOPPED SNICKERS® BARS**

NET WT. 10 lbs.  
(4.54 Kilograms)

**CHOPPED SNICKERS® BAR**

**INGREDIENTS:** Milk Chocolate (Sugar, Cocoa Butter, Chocolate, Skim Milk, Lactose, Milkfat, Soy Lecithin), Peanuts, Corn Syrup, Sugar, Palm Oil, Skim Milk, Lactose, Salt, Egg Whites, Artificial Flavor. Corn Starch is Used As A Processing Aid.

**CONTAINS: PEANUTS, MILK, EGG AND SOY. MAY ALSO CONTAIN TRACES OF: TREE NUTS AND WHEAT.**

Snickers® is a registered trademark of Mars Chocolate North America.

Processed and Distributed by  
**TR TOPPERS, INC.**

Pueblo, Colorado  
800-748-4635  
[www.trtoppers.com](http://www.trtoppers.com)



ZS900-100



Nutrition Facts	
About 216 servings per container	
Serving size 2 Tbsp (21g)	
Amount per serving	
<b>Calories 100</b>	
% Daily Value*	
Total Fat 5g	6%
Saturated Fat 2g	10%
Trans Fat 0g	
Cholesterol 0mg	0%
Sodium 50mg	2%
Total Carbohydrate 13g	5%
Dietary Fiber 1g	4%
Total Sugars 11g	
Includes 10g Added Sugars	20%
Protein 2g	
Vitamin D 0mcg	0%
Calcium 17mg	2%
Iron 0mg	0%
Potassium 61mg	2%

\*The % Daily Value (DV) tells you how much a nutrient in a serving of food contributes to a daily diet. 2,000 calories a day is used for general nutrition advice.



**CAUTION!**  
WHEN OPENING BOX, CUT THROUGH TAPE SURFACE ONLY. DEEP PENETRATION OF THE BLADE WILL DAMAGE CONTENTS.